

# Portable type Luz Solar



January, 2015

**Kens.co**

Tosu, Japan

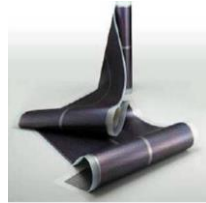
# What is Portable type Luz Solar?

## 1. Features of Luz Solar?

Luz Solar is flexible and thin-film type solar panel with the following advantages.



Super Lightweight  
& Thin-Film



Flexible



Washable



Windable



Robust

## 2. Portable type Luz Solar

Portable type Luz Solar is superlight weight, thin film type (2mm thickness) and can be hand-carried for the deployment anytime, anywhere.

For example, it can be immediately deployed outside or at the veranda or window of your apartment house.

The battery of 560g weight has a large capacity of 23Ah (3.7V).

### Portable-type Luz Solar

#### 16W Solar Panel

- L888mm x W360mm
- Weight: 400g

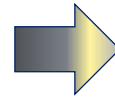


#### Lithium Ion Polymer Battery

- 23Ah Capacity (3.7V)
- Weight: 560g

# Use Case: Apartment House during Power Failure

**During power failure, the solar panel can supply the power to the house.**



LED Light



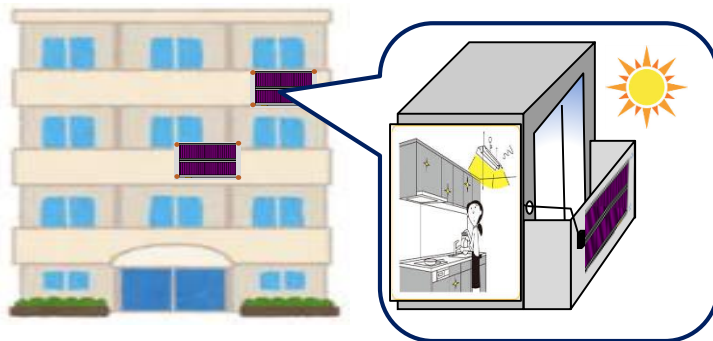
Charge to  
Mobile



DC-motor  
Electric Fan

Countermeasure against Power Outage

**Even at the apartment house without the roof or garden, solar panel can be installed on the veranda, window or wall.**



Hanging down  
form veranda



Hanging down  
form window

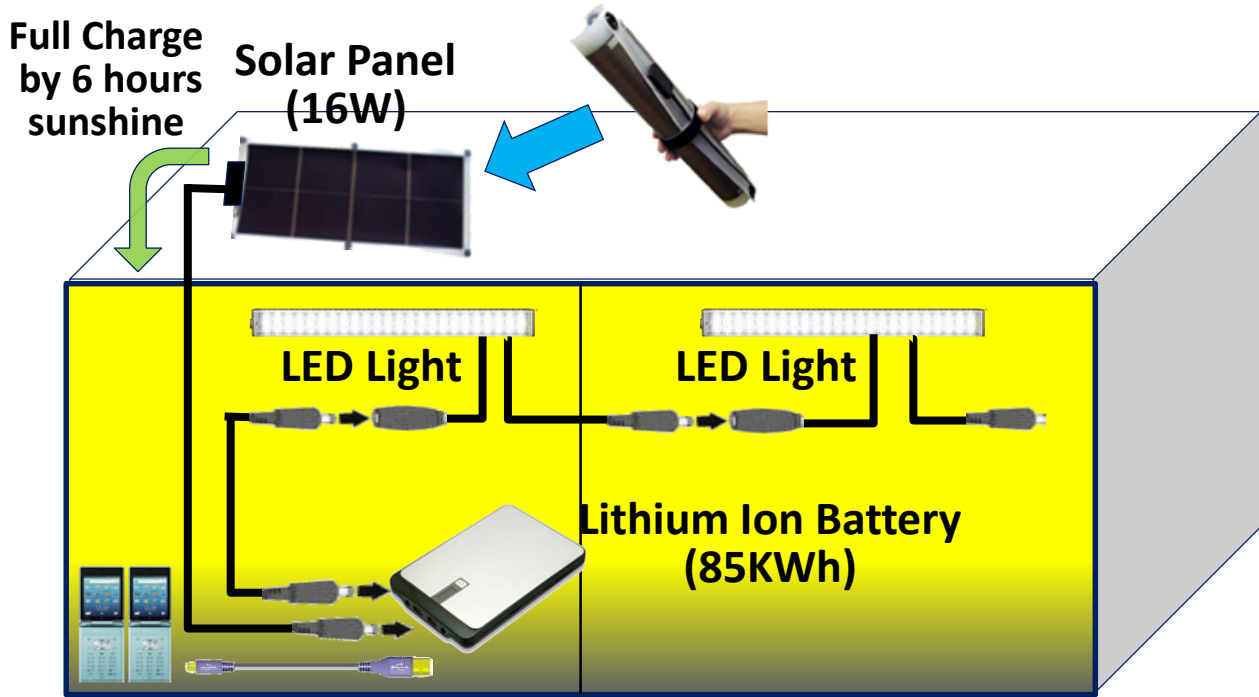


Hanging down  
form wall

# Advantage: Without Any Installation Work

**No installation is required for solar panel and cable wiring!**

- (1) Just put the solar panel on the roof
- (2) Only insert the male connectors into the female connectors from the panel to LED lights through the battery.

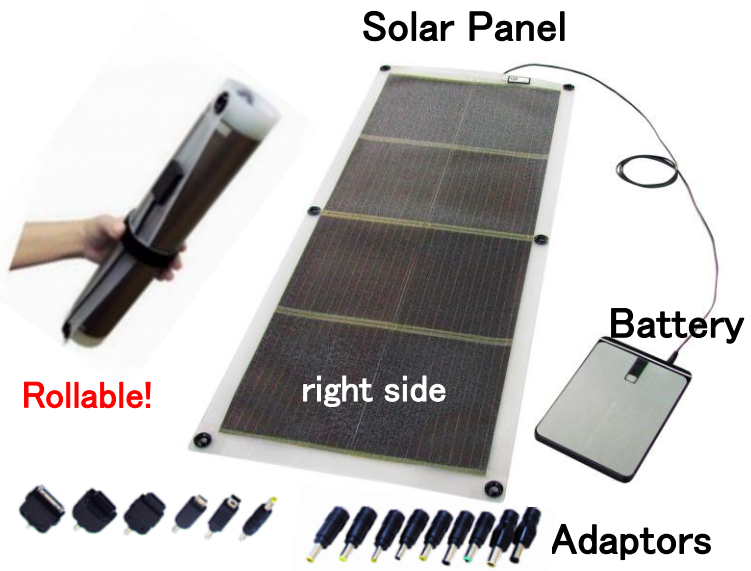


## Example of One Day Usage

Items	LED Light	Charge to Mobile Phone
Q'ty	2 sets	2 sets
Power	5KW x 8 hours	2KWh
Total	80KWh	4KWh

# **Manual of Parable type Solar Power System**

# 1. Specifications of Parable type Solar Power System



## Solar Panel

Material	Amorphous Silicon
Output Power	Max. 16W/DC18V
Dimension	L888mm x W360mm
Thickness	2mm (except Joint Box)
Weight	About 400g
Operation Temperature	-20°C ~ 60°C
Waterproof	IP13

## Battery

Material	Lithium Ion Polymer Battery
Output Power	DC 9V/4.0A (max), 12V/4.0A (max), 16V/4.0A (max), 19V/3.5A (max), 20V/3.0A (max)
Battery Capacity	23Ah / DC3.7V
Full Charging Time	Form Solar Panel: 10 to 13 hours From AC 100V: 5 hours
Using Time	6.3 hours for standard PC (only for reference, not guaranteed value)
Dimension	W124mm x H185mm x D19.5mm
Weight	560g
Adapter	15 types adaptors attached
Operation Temperature	5°C ~ 35°C
Battery is not waterproof	

## 2. DC In Port for the charging from Solar Panel or AC Adapter



- DC Out Port DC 9V/4.0A (max), 12V/4.0A (max), 16V/4.0A (max), 19V/3.5A (max), 20V/3.0A (max)
- USB Out Port DC 5V/2.1A (max)
- USB Out Port DC 5V/1.0A (max)
- DC Input Port DC 15V~24V/2A (max)**

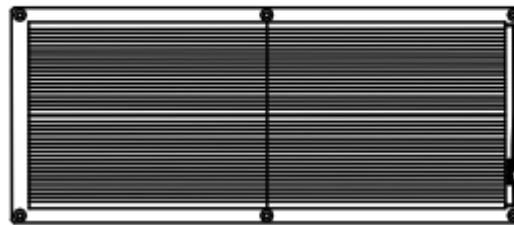
While charging to the battery, "battery residual amount" and "power charging mark" is displayed.



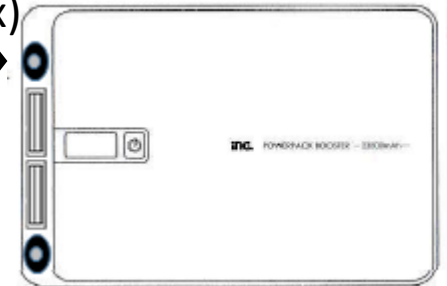
Power charging mark



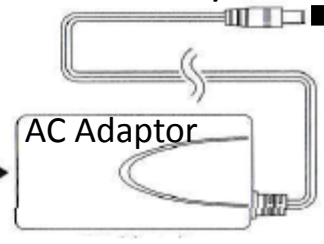
16W/DC18V (max)



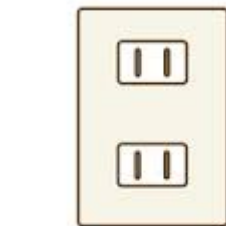
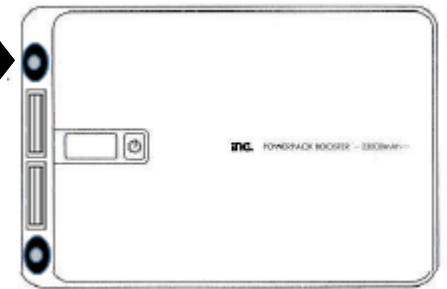
Charging from Solar Panel



DC18V/2.0A



AC Adaptor



AC 100~240V  
50/60Hz 2.0A

Charging from AC Power Supply

Note: When the battery is not charged or the display is flickered, please charge it after disconnecting all cables.

# 3. DC Out Port for the use or charging of PC or LED Light etc.



- DC Out Port DC 9V/4.0A (max), 12V/4.0A (max), 16V/4.0A (max), 19V/3.5A (max), 20V/3.0A (max)
- USB Out Port DC 5V/2.1A (max)
- USB Out Port DC 5V/1.0A (max)
- DC Input Port DC 15V~24V/2A (max)

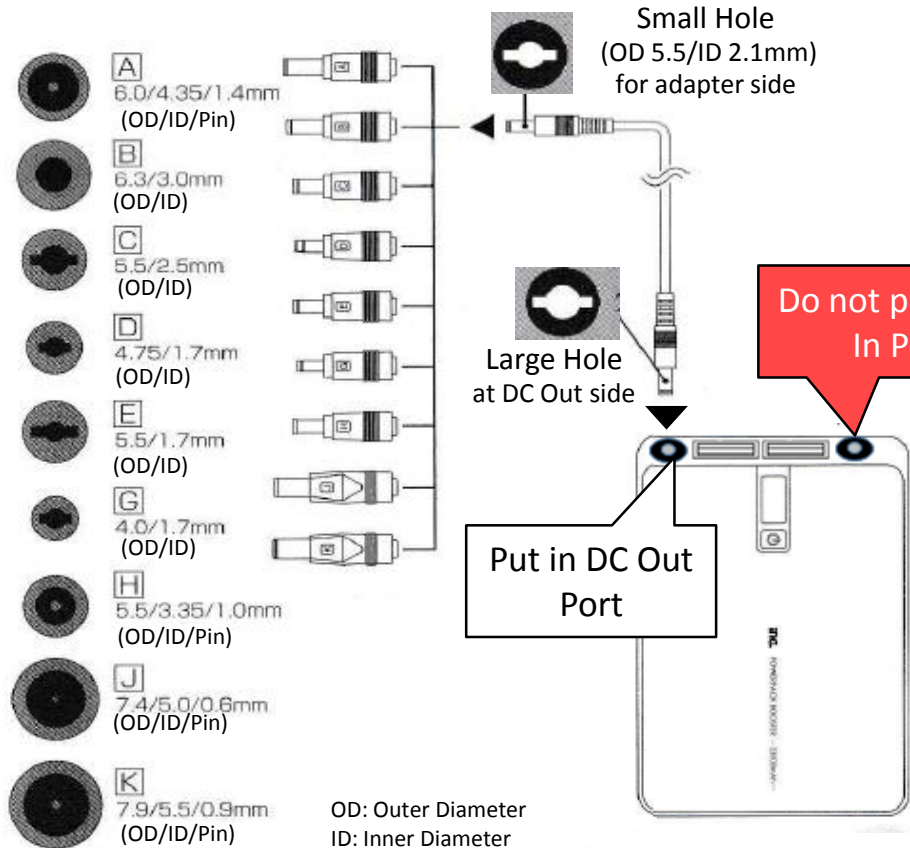
When connecting DC cable, "battery residual amount" and "DC Out voltage" is displayed.

**Before connecting DC cable, be sure to select the suitable voltage among 9V, 12V, 16V, 19V or 20V during "V" mark on the display flickers. (Other voltages cannot be used.)**

**1 Long Press**

"V" mark flickers

**2 Select Voltage**





# 4. USB Out Port for use or charging of Mobile Phone & TV Game etc.



Mobile Phone



Smart Phone



DS



PlayStation



DC Out Port DC 9V/4.0A (max), 12V/4.0A (max), 16V/4.0A (max), 19V/3.5A (max), 20V/3.0A (max)

USB Out Port DC 5V/2.1A (max)

USB Out Port DC 5V/1.0A (max)

DC Input Port DC 15V~24V/2A (max)

When USB port is used, "battery residual amount" and "USB mark" is displayed.



USB mark

