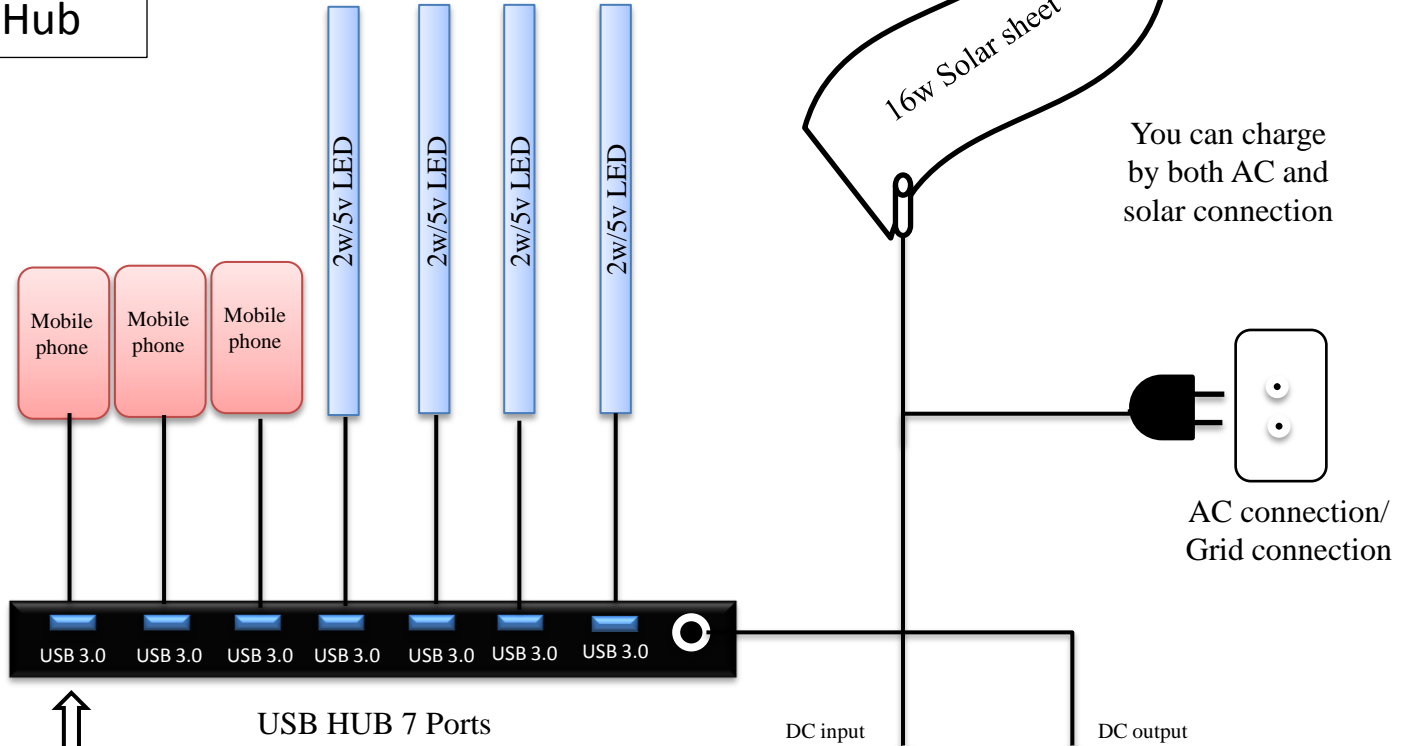


Portable Solar system  
with  
16w Flexible solar  
Lithium Battery 23000mAh  
7 UUB 3.0 Charging ports Hub  
LED light with USB cable

KENS.CO Ltd  
JAPAN

# New Portable solar system with USB Hub



USB HUB 7 Ports

USB HUB 7 Ports



Dual USB Plus Another DC Output  
Supports simultaneously charging for 3 devices

1. You can use 7 LED lights
2. Mobile phone charge
3. Laptop charge
4. DVD camera charge
5. You can carry the battery anywhere
6. No extra cable you need to require
7. You can charge by both AC and solar panel

23000mAh  
Lithium Battery

Display

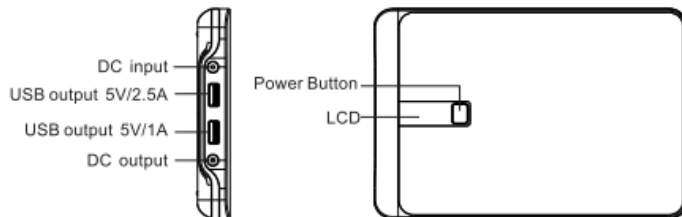


# バッテリーのスペック

## Battery specification

**Dual USB Plus Another DC Output**  
 Supports simultaneously charging for 3 devices

### Product Introduction Parts



### Feature

1. Monster capacity of 23000mAh.
2. Fashion and metal cover design.
3. Wide range of output voltage option: 5V/9V/12V/16V/19V/20V, compatible with laptops, tablets, smartphones and many other 5V USB-powered devices.
4. With DC and dual USB output, you may charge 3 devices simultaneously.
5. Multiple protection system ensure worry-free safety usage: overcharging protection, overvoltage protection, overcurrent protection and short circuit protection.
6. With the smart LCD display, easily check the remaining power and the output voltage.

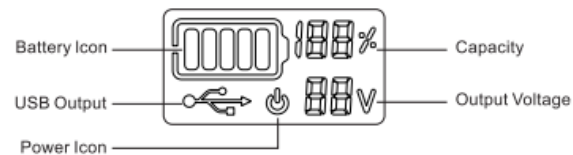
### Specification

Battery Type: Li-polymer Battery  
 Capacity: 23000mAh/85Wh  
 Input: DC 15~24V/2A  
 Output: DC 9V/12V/16V/19V/20V 4.5A(MAX)  
     USB1: 5V, 2.5A(MAX)  
     USB2: 5V, 1A(MAX)  
 Dimension: 7.2\*4.9\*0.6 inch  
 Weight: 19.7±0.35 ounce

### Fit For:



### How to use the Pilot Pro2



1. Short press the button to turn on, LCD will display the remaining power and the DC output voltage for 3 seconds.
2. Press the button for 3 seconds, the voltage icon blinks and get to the voltage adjustment step, then choose your voltage option by pressing the button.
3. The voltage adjustment will get stable without pressing the button in 3 seconds, the LCD will turn off automatically.

### How to charge the Pilot Pro2

1. Connect the AC adapter to the input port of Pilot Pro2.
2. Plug the AC adapter into a wall socket.

**Note:** Please fully charge and restart the Pilot Pro2, if it's under lock status or in short circuit protection caused by incorrect operation.

### Charge for 5V USB-Powered devices

1. Make sure your device is DC-5V USB-charged.
2. Use USB cable to connect your device with the USB output port of Pilot Pro 2.
3. Built-in identified microchips turn on the Pilot Pro and start charging automatically (If Pilot Pro2 can not be activated automatically, simply short press the Power button to turn it on).

### Charge your laptop or other devices

1. Confirm the input voltage of your laptop or other devices before charging, then switch the voltage of Pilot Pro2 to the corresponding option.



## LED Specification :

Color: White

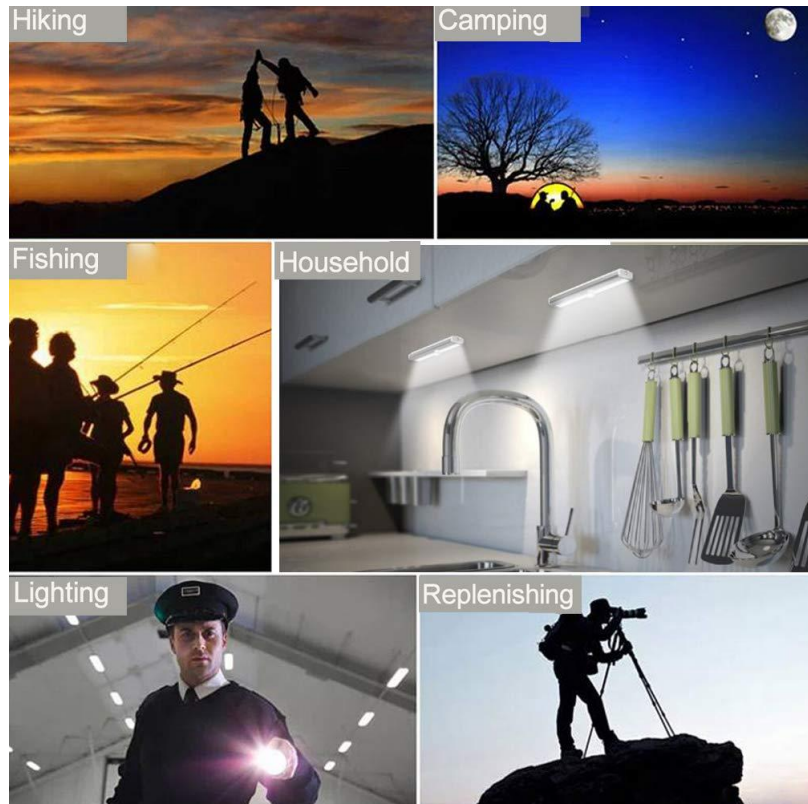
Power input: USB DC 5V

Nominal Power: 2W

LED : 18 pcs (2835 SMD)

Cable Length : 90cm

Size :200mm(L)x 12mm(W)



## 7 USB 3.0 charging ports Hub



<b>Material</b>	<b>High Grade Plastic</b>
Color	Black
Dimension	175*75*25mm
Weight	168g
Output Interface	7*USB 3.0 male A type USB ports
Input Interface	UBS 3.0 standard B type DC 12V input
System requirements	Windows xp/vista/7/8, Mac OS
Certification	CE,FCC, RoHS

