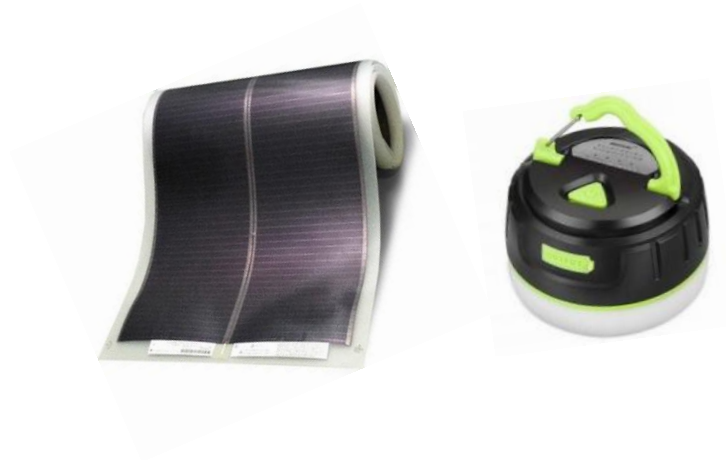


Emergency Rechargeable LED Light System  
With  
Amorphous solar sheet



Prepared  
By  
[Kens.co Japan](http://Kens.co Japan)  
Jan 15<sup>th</sup>, 2019

# SPEC OF LED RECHARGABLE LANTERN

## Built-in 2800 mAh power bank

Charge your devices in emergency.  
Long lighting time on a full charge.  
The same USB charger used for your smart phone will also work to charge this lantern.

## Five modes for different needs

High Mode: 196 Lumens  
Middle Mode: 64 Lumens  
Low Mode: 24 Lumens  
Strobe/SOS: Ask for help in emergency

## Long lasting time of light

50 Hours at low brightness mode.  
17.5 Hours at middle brightness mode.  
5 Hours at high brightness mode.

## Warm light, protect your eyes

Warm white lamp cover to make light more soft and natural,  
protect our eyes.

## Built-in Magnetic

Built-in Magnetic Base help to mount the lantern when you are  
Getting the car fixed.



USBケーブルから充電して使えるLEDランタンです。



## Overcharge Protection

The built-in microchip will automatically stop charging when it is overcharged.

## Various Usage

Nice lantern for camping, hunting, wild survival, hiking, fishing, trekking, or just for outages and emergencies, such as storms, hurricanes, typhoon, earthquake, etc.

## How to use

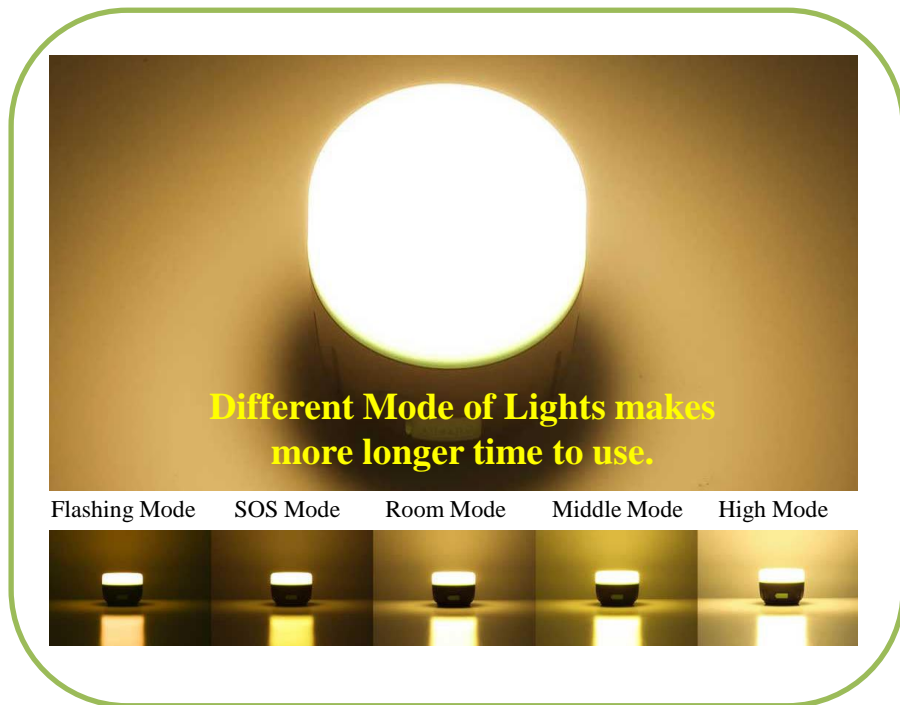
Turn on (Hold down the “ON” button for 1.5 seconds) - Press once (Medium Mode) – Press again (Low Mode) – Press again (High Mode) - Press again (Strobe) – Press again (SOS) – Turn off (Hold down the button for 1.5 seconds)

## Specifications

Capacity: 2800 mAh  
Output: DC 5 V/2 A(max)  
Input: DC 5 V/2 A(max)  
Light Power: 4 W  
Dimension: 3.14”x 2.36”  
Weight: 186g  
Charge time: 1.5~3 hours



# MERIT (メリット)



# Multiple Charging System of Rechargeable LED Lantern



<b>Main option 1: Charge by Amorphous Solar 10.8W</b>	
Main material:	amorphous silicon
Maximum power generation capacity	10.8 W
Maximum output power	9.5W
Maximum output voltage	5.0 V
Maximum output current	1.9A
Dimensions (mm):	L 915 x W 250 t = 1
Weight (kg):	about 0.24
Product temperature	0 ° C to + 60 ° C
Operating humidity	85% RH
Storage temperature	-20 ° C to + 60 ° C



## Option 2: By Portable Lithium Battery 23000mAh

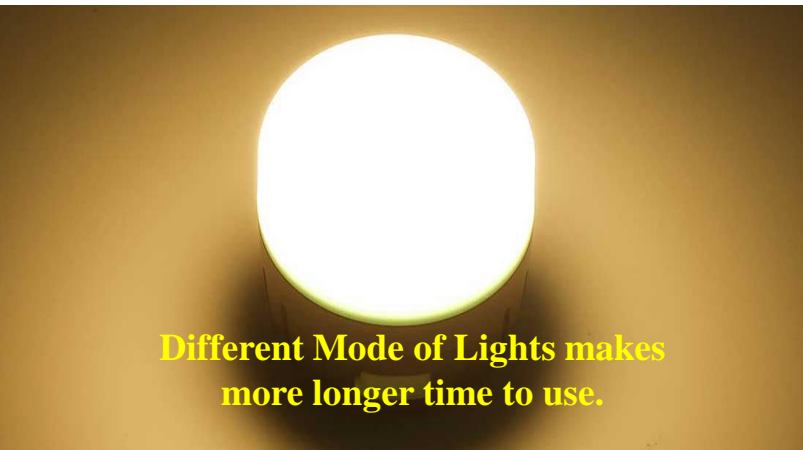
You can charge this bulb with this battery for 9 times. Also you can charge this lithium battery by both solar and AC adaptor as well.



Connect micro USB cable to 5v.2A USB port of lithium battery & the blue light will sparkling on the LED bulb which means it is charging . Before charging, Set the lithium battery to 9v



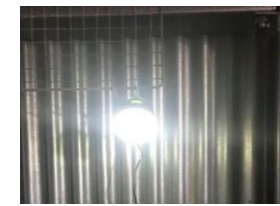
It is bright enough to use in any darkness. Very convenient and portable solar system. You can carry it with you to any where.



Different Mode of Lights makes more longer time to use.



USBケーブルから充電して使えるLEDランタンです。



Flashing Mode    SOS Mode    Room Mode    Middle Mode    High Mode



Hanger    Emergency switch

4W Rechargeable LED Light



10.8W Solar Sheet

