

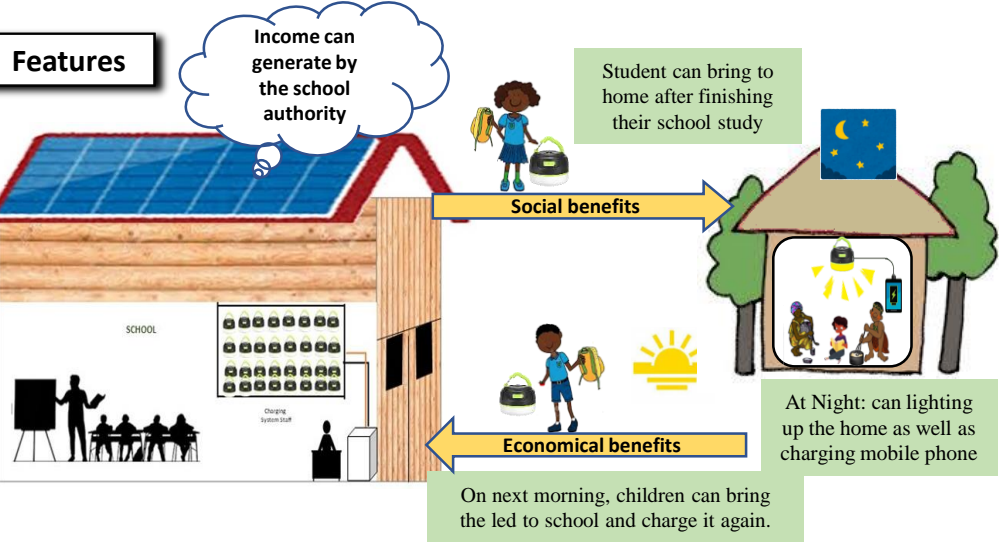
Charging Hub for Schools

Rechargeable LED Lantern with solar system

How to use



Features



Help to meet global target



How to connect

1 Connect solar cables into the controller box

2 Connect each usb port's cable to the connectors from controller box

3 Second connect all Lantern to USB port by usb cable

4 Switch ON both Solar and Battery from circuit

5 Lastly, when you connect all Lantern's USB cable to USB Hub then switch ON each USB Hub

LED Indications



Red
Lighting while using LED Light

Green
Blinking: During charging
Solid Green: Fully charged

Charging Time (indication)



- LED Lantern for built-in 1800mA battery: Approx. 2-3 hours (*subject to sunshine conditions)
- During cloudy or rainy days, it will take longer time to be charge.

3-Lighting Mode

- Super bright light mode (300lm, 6 hours)
- Medium bright mode (100lm, 18 hours)
- Blinking mode (70lm, 30 hours)
- Switch Off

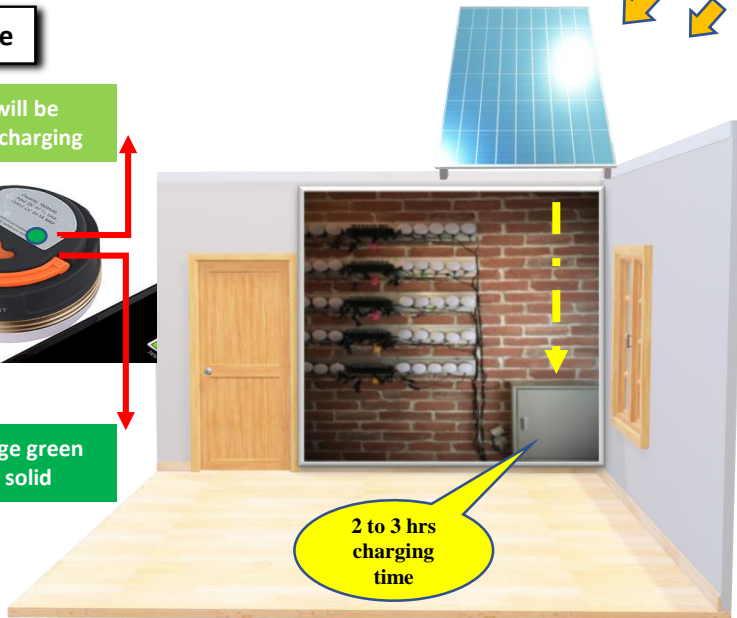


How it will charge

- Green light will be blinking while charging



- When full charge green light will be solid



Unplugged while full charged



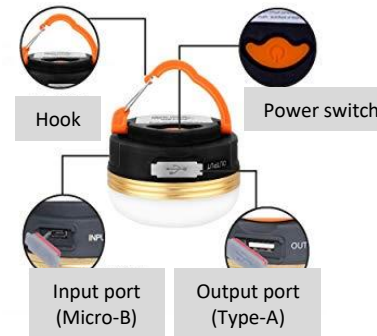
Please unplugged all lantern USB cables after full charge. Otherwise battery in controller box may not be full charged during daytime.

Items included with systems



Specifications

Solar Panel	Monocrystalline silicon 48(4*12)
Dimension	1979*689*5.6mm
Weight	4.8kgs
Pmax	215w
Vmp	25.7V
Imp	8.37amp



LED Lantern	Specifications
Number of LEDs	5 LEDs(COB)
Lighting Mode	Super bright light (300lm, 6 hours)Medium bright (100lm, 18 hours)Blinking (70lm, 30 hours)
Latium-ion battery	1800mAh
Size (without hook)	Diameter 75mm x Height 45mm
Weight	85g

Kens.co

60-6 Harumachi, Tosu city, Saga prefecture, 841-0024 Japan
Tel: +81-942-83-6331 Fax: +81-942-85-2612
E-mail: zahed@kensco.jp