

Unplugged while full charged



Please unplugged all lantern USB cables after full charge. Otherwise, battery in controller box may not be full charged during daytime.

Items included with systems



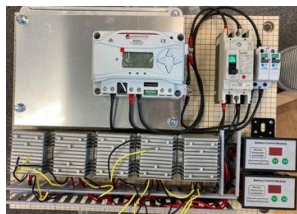
215w solar
3pcs



USB port
10pcs



LED Lantern
100pcs



Lithium-ion battery, controller
15v32.5Ah



steel frame
10pcs

Specifications

Solar Panel	Monocrystalline silicon 48(4*12)
Dimension	1979*689*5.6mm
Weight	4.8kgs
Pmax	215w
Vmp	25.7V
Imp	8.37amp



Charging Hub for Schools

Rechargeable LED Lantern with solar system

How to use



Charging Terminal

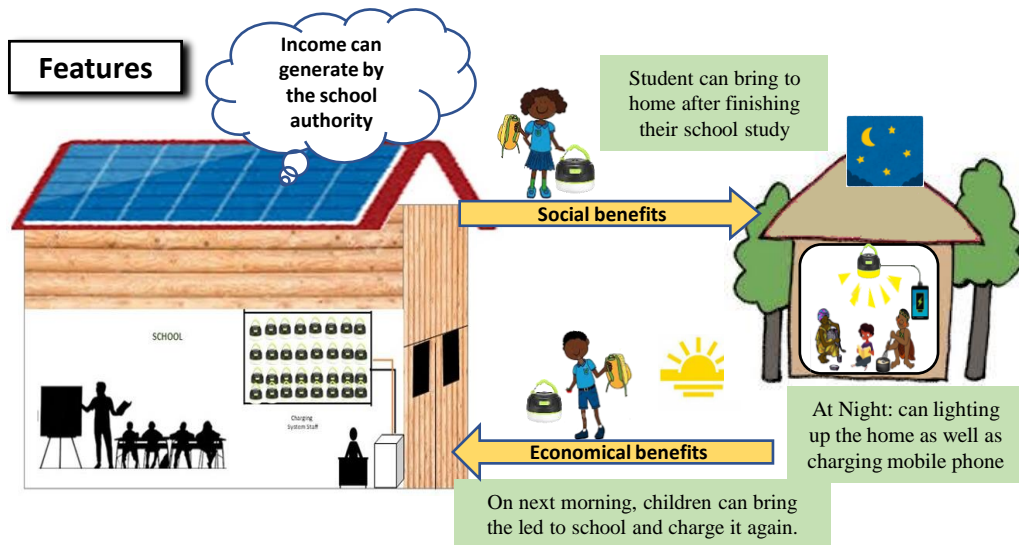


Connect to USB hub/port



3-mode LED Light

Features



Help to meet global target



LED Lantern

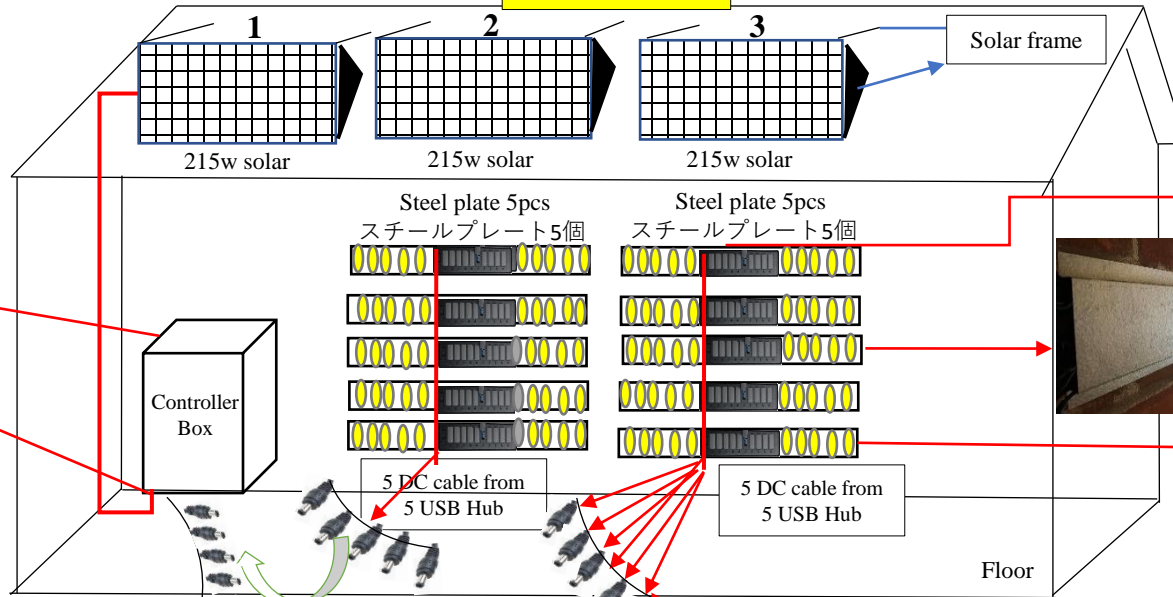
Specifications

Number of LEDs	5 LEDs(COB)
Lighting Mode	Super bright light (300lm, 6 hours)Medium bright (100lm, 18 hours)Blinking (70lm, 30 hours)
Latium-ion battery	1800mAh
Size (without hook)	Diameter 75mm x Height 45mm
Weight	85g

Quick View of installation procedure:

215wソーラーパネル

215w solar-3pcs



一当たりUSBハブには10個のUSBポートがあります

10 ports of each USB hub



10pcs of Steel plate for LED holder



Each steel plate will hold 10 pcs of LED Lantern

コントローラボックス

Controller Box



PV cable connection to controller box

10 DC plugs outside the controller box
10個Dc プラグ

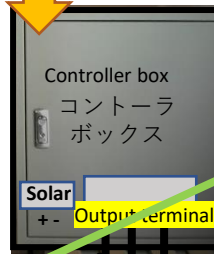
Connect all dc plugs to each other



10個Dc プラグ



USB port cable



Controller box
コントローラボックス

Solar
+ - Output terminal



Use this 3M DC cable to connect between USB port and controller box
3M DCケーブル

KENS.CO